

Thermal Body Temperature Measurement

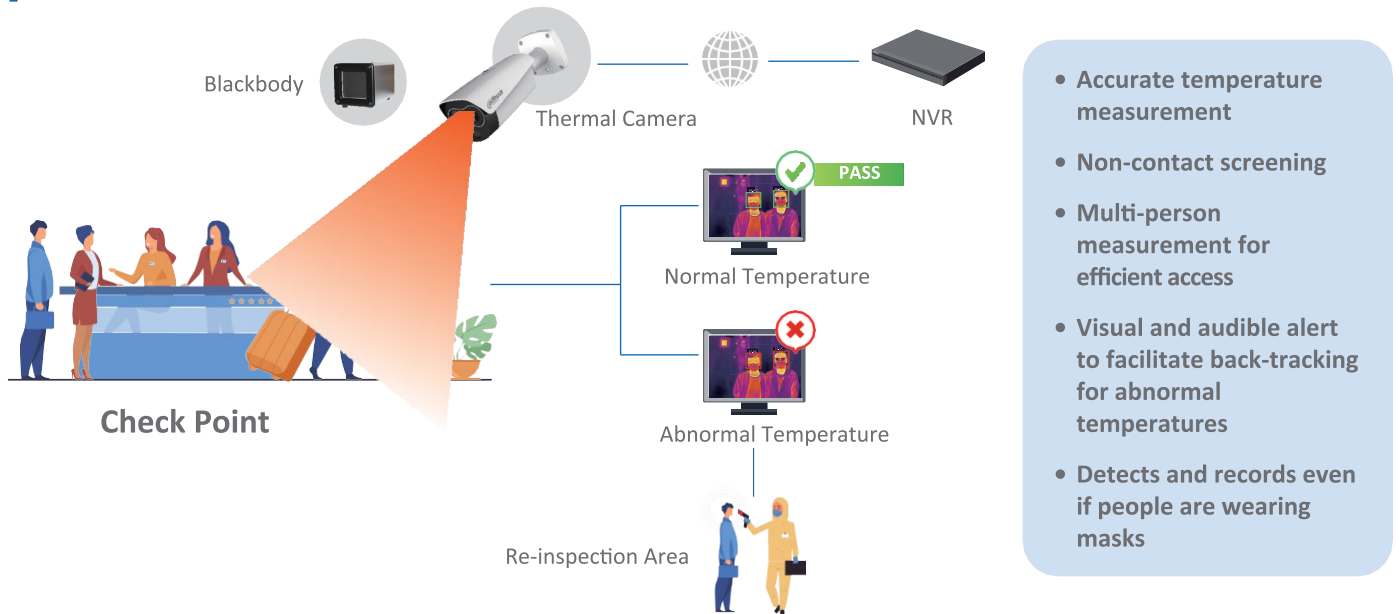
Efficient, Visible & Real-Time



The Dahua thermal camera is a highly accurate body temperature measuring system, accurate to $\pm 0.3^{\circ}\text{C}$ (with blackbody).

The built-in AI algorithm allows for multi-person measuring (up to 15 at a time) at a 3m distance ensuring rapid non-contact screening and tracing.

Solution

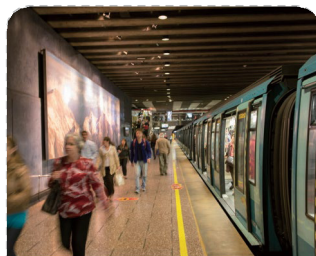


- Accurate temperature measurement
- Non-contact screening
- Multi-person measurement for efficient access
- Visual and audible alert to facilitate back-tracking for abnormal temperatures
- Detects and records even if people are wearing masks

Application Examples



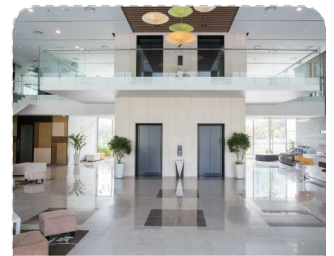
Airports



Rail Stations



Commercial Buildings



Apartment Complexes

Product Inclusions



Thermal Camera + Blackbody

Thermal: 256 x 192, 7mm
 Visible: 2MP, 8mm
 White light and loudspeaker alarm
 Temperature accuracy $\pm 0.3^{\circ}\text{C}$
 (with blackbody)



Network Video Recorder (NVR)

TPC alarm event linkage
 Statistical report and export
 4 channels mask detection
 4 channels face recognition
 4TB storage capacity



Tripods

2 x Tripods

* Design and specifications are subject to change without notice.

Ver. 1, May. 2020